



**Mészöly
Focisuli**



IV. International Mészöly Cup (Borned after 01.01.2004.)

13-14 June 2015.

Sport11 Stadium (Budapest, 1112 Kánai út 2.)

Group A csoport: MTK-Mészöly Focisuli, IF Brommapojkarna, CFR Cluj, Újbuda

Group B csoport: FK Hoverla Uzshorod, Debreceni Honvéd Olasz FS, Tatran Presov, FK Rad Beograd

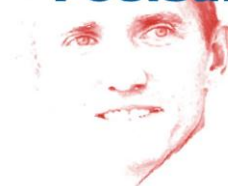
Pitch	Time	Teams	Result
	Saturday 13.06.		
1.	15:00-15:35	MTK-MFS – Brommapojkarna	
2.	15:00-15:35	CFR Cluj – Újbuda	
1.	15:40-16:15	Uzshorod – Debreceni HOF	
2.	15:40-16:15	Rad-Beograd – Tatran Presov	
1.	16:20-16:55	MTK-MFS – CFR Cluj	
2.	16:20-16:55	Brommapojkarna – Újbuda	
1.	17:00-17:35	Uzshorod – Rad-Beograd	
2.	17:00-17:35	Debreceni HOF – Tatran Presov	
1.	17:40-18:15	MTK-MFS – Újbuda	
2.	17:40-18:15	Brommapojkarna – CFR Cluj	
1.	18:20-18:55	Uzshorod – Tatran Presov	
2.	18:20-18:55	Debreceni HOF – Rad-Beograd	
	Sunday 14.06.		
1.	10:00-10:45	A III. - B IV.	
2.	10:00-10:45	A IV. - B III.	
1.	10:50-11:35	A I. - B II.	
2.	10:50-11:35	A II. - B I.	
1.	11:40-12:25	5-6. place	
2.	11:40-12:25	7-8. place	
1.	12:30-13:15	1-2. place	
2.	12:30-13:15	3-4. place	

OPENING CEREMONY: June 13., Saturday 14:30 pm

PRIZE GIVING CEREMONY: June 14., Sunday 13:30 pm



**Mészöly
Focisuli**



Rules of the IV. International Mészöly Cup

Pitch size: : 55 X 35 m (sintetic grass)

Goal size:: 5x2 m,

Ball size: match ball size 4

Time: 2x15 min (in the group games); 2 x 20 min (play-off and final games)

1. Number of the players: 6+1 (on field); substitutions: maximum 5 players (flying change is allowed; unrestrictedly;).
2. Any of the players can change place with the goalkeeper, if you announce it o the referee.
4. Goal can't be scored directly by a kick off or a throw in.
5. If the ball leave the pitch by the sideline kick in is only permitted.
6. Players have to stay 5 meters from the ball if there is a corner, or a free kick. The referee is allowed to give a 2 minutes send-off, if a player contravene this rule!
7. Back pass rule: the goalkeeper is not allowed to handle!
8. Penalty kick: 9 meters. Penalty area: 12x24 meters.
9. A referee could give a yellow card to admonish a player, and referee can send off a player for 2 minutes without using any card. The red card is used to communicate that a player is sent off for 5 minutes, this player cannot come back this game, but after tha 5 minutes another player can. Players who are cautioned with a red card are automatically locked for the following game.
10. Number of points: 3 points for a win; 1 point for a draw. Ranking in the groups:
 - more points,
 - result against the same placed (with same points) team (if more than one teams have the same points a mini table is made to decide the places. In this table the ranking: more point, goal difference, more goals kicked),
 - goal difference,
 - more goals kicked,
 - 3-3 penalties (from 9 meters)
11. If a game ends with a draw during the play-off and the final game the palyers shoot 3-3 penalties. After this session the teams continue the penalties one by one till the first miss.
12. Certification of the players: before the first game all teams have to fill in the report. Near the personal datas you have to accord the fixed number of the players (It is important to have passport).
13. 1 plus year is permitted for the girls (key date: 2003.01.01.).
14. In any other specials please see the general rules of football.